

Fluke iSee™ Mobile Imaging Series ii01 Acoustic Camera for Smartphone



The new addition to the Fluke iSee™ Mobile Imaging Series, the ii01 Acoustic Camera for Smartphone directly connects to the Type-C interface of a smart phone to display professional acoustic images. It can be used for detecting air or gas leaks, assessing air tightness, identifying mechanical abnormal sounds anytime and anywhere. With no complex setup required, it greatly improves the troubleshooting efficiency.

Professional Acoustic Imaging

- **Professional Display:** Integrating 16 high-precision MEMS sensors with the Fluke's SoundMap™ acoustic imaging technology, it can quickly locate sound sources.
- **Wide applications:** Covering the sound wave frequency band range from 2kHz to 48kHz, it is applied to common industrial application scenarios such as air or gas leaks, air tightness detection, and locating noise.
- **Leak mode:** 40kHz frequency band can be enabled with a single key on the main menu, which is used for detecting air or gas leaks quickly.
- **dB shown:** The screen shows the dB value of the target center point in real time while locating leaks for additional assessment.

Unparalleled usability

- **Plug and play:** it can be directly connected to the Type C interface of your smart phone to start the test without charging or turning it on.
- **Compact and light:** It is made of high-quality aluminium material for airway combined with an innovative compact design, which weighs only 50g and can be easily put in a pocket for use as needed without any burden.
- **Quick to get started:** It is designed with no buttons and a minimalist UI. You can get started in an instant without complicated operations.
- **Direct share:** Images and videos can be shared and reported anytime and anywhere via mobile phones.
- **Data Storage:** You can take images and videos up to 5 minutes long, which are directly stored in your phone's library with custom watermarks added for storage archive.

**Fluke iSee ii01 Acoustic Camera
for Smartphone**
The acoustic expert in your pocket

Compact and light

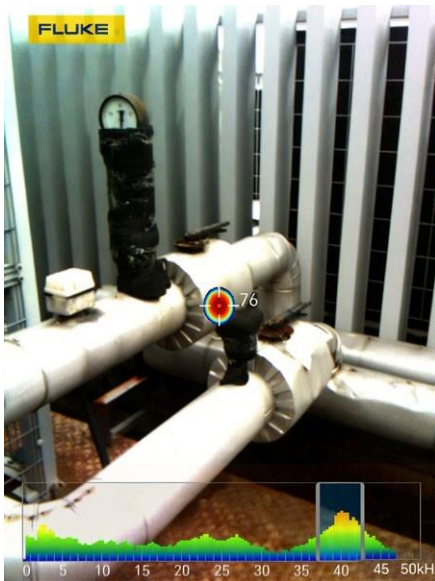
Convenient and easy

Collaborative sharing

SoundMap™ Imaging



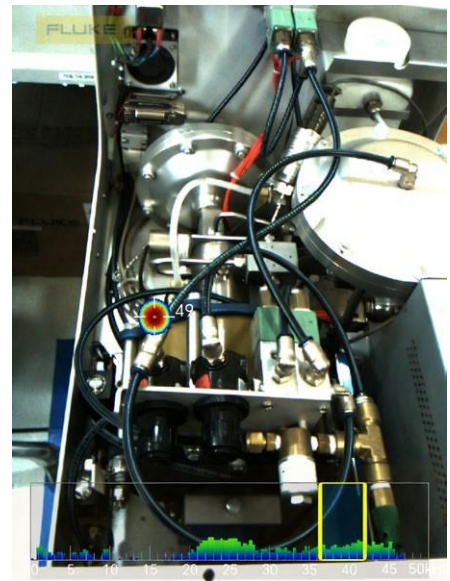
Application scenarios:



Leak detection on a pipeline



Compressed air leak detection of injection molding machines



Air tightness inspection of complicated equipment pipelines

iS How to download the Fluke iSee™ application

Simplified user interface design makes it easy to take images and videos, capture abnormal sounds, and fast communication through quick share.



For Android devices, please scan the QR code above to download it
Fluke iSee™ application

* Android™ 6.0 / HarmonyOS 2.0 and above supported, and the OTG feature needs to be enabled on the smart device

Detailed Specifications

Performance specifications and features	
Microphones	16 high-precision MEMS sensors
Frequency band	2kHz to 48kHz
Detection range	0.50 m to 50 m (based on site conditions)
Field of view (H x V)	50° x 38°
Frame rate	20 Hz
Sensitivity	-38 dBV
Signal-to-noise ratio	73 dBA
Visible lens resolution	2 MP
Acoustic image	SoundMap™ image
Quick leak detection mode	Leak mode enabled: Frequency band locks at 37.4 kHz to 42.6 kHz Leak mode disabled: Frequency band selection through manual slider
dB value of the target centerpoint	Yes, it can be enabled or disabled
Focal length	50cm to infinity
Image format	JPG, MP4 (up to 5 minutes)
Color palettes	3: IronRed, Blue-Red and Grayscale
Palette: Color Blending	Yes, 0% ~ 100 %
Customized watermark	Image or English character watermarks
General Specifications	
Interface	Type-C
OS supported	Android / HarmonyOS
Operating temperature	0 °C to +40 °C
Storage temperature	-30 °C to +60 °C
Operating humidity	10% to 90% RH, non-condensing
Operating altitude	Up to 2000 m
Storage altitude	Up to 12000 m
Power consumption	1.2 W (Typical)
Ingress protection	IEC 60529: IP54
Size (L x W x H)	61 x 50 x 12 mm
Weight	50g
EMC Environment	IEC 61326-1: Electromagnetic environment for portable equipment CISPR 11: Group 1, Class A Group 1: Equipment intentionally generates and/or uses conductive-coupled RF energy, which is necessary for its internal operation. Class A: Equipment is suitable for use in all establishments other than domestic and those directly connected to a low-voltage power supply network that supplies buildings used for domestic purposes. There may be potential difficulties in ensuring electromagnetic compatibility in other environments due to conducted and radiated disturbances. Caution: This equipment is not intended for use in residential environments and may not provide adequate protection to radio reception in such environments. Class A Equipment (Industrial Broadcasting & Communication Equipment) Class A: Device meets requirements for industrial electromagnetic wave equipment and the seller or user should take notice of it. This equipment is intended for use in business environments and not to be used in homes. 47 CFR Part 15 Subpart B This product is considered an exempt device per clause 15.103.
International	
Korea (KCC)	
America (FCC)	
Warranty	2 years

Ordering Information

- Fluke ii01 Acoustic Camera for Smartphone

Standard accessories

- Fluke ii01 Acoustic Camera for Smartphone
- Black carrying case
- Packaging box
- Getting Started Guide

Fluke. Keeping your world up and running.™

©2026 Fluke Corporation. Specifications subject to changes without notice.

Modification of this document is not permitted without written permission from Fluke Corporation.